

Start

OUT Route

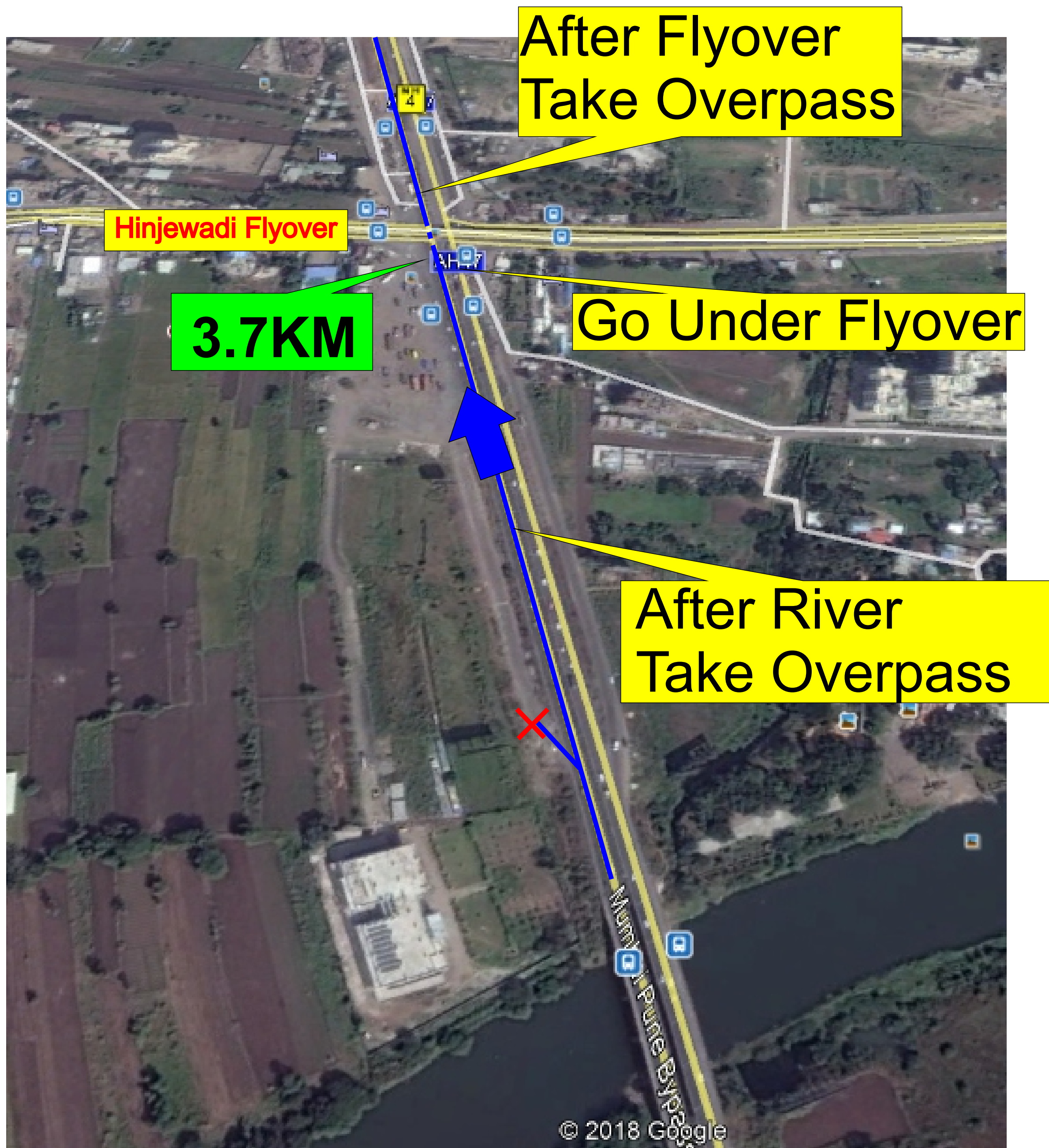


**Join NH4
Beware of
High Speed Traffic**

**Left Turn at
VITS**

**Left Turn
at Balewadi Gate**

OUT Route



OUT Route

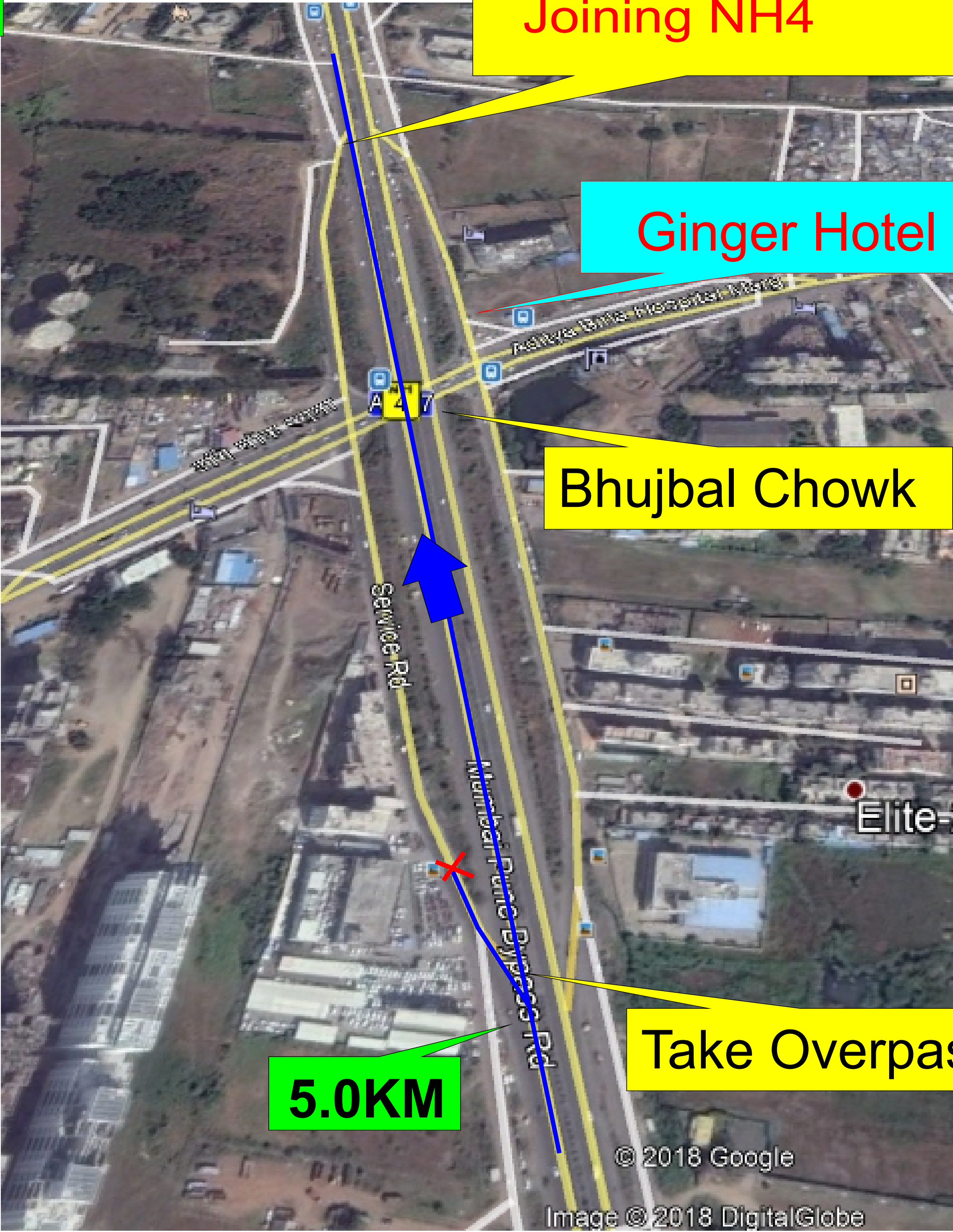
Beware of Traffic
Joining NH4

Ginger Hotel

Bhujbal Chowk

Take Overpass

5.0KM



Join NH4
Beware of
High Speed Traffic

OUT Route

Expressway

Take Tunnel



After Sentosa Hotel

Take Service Road

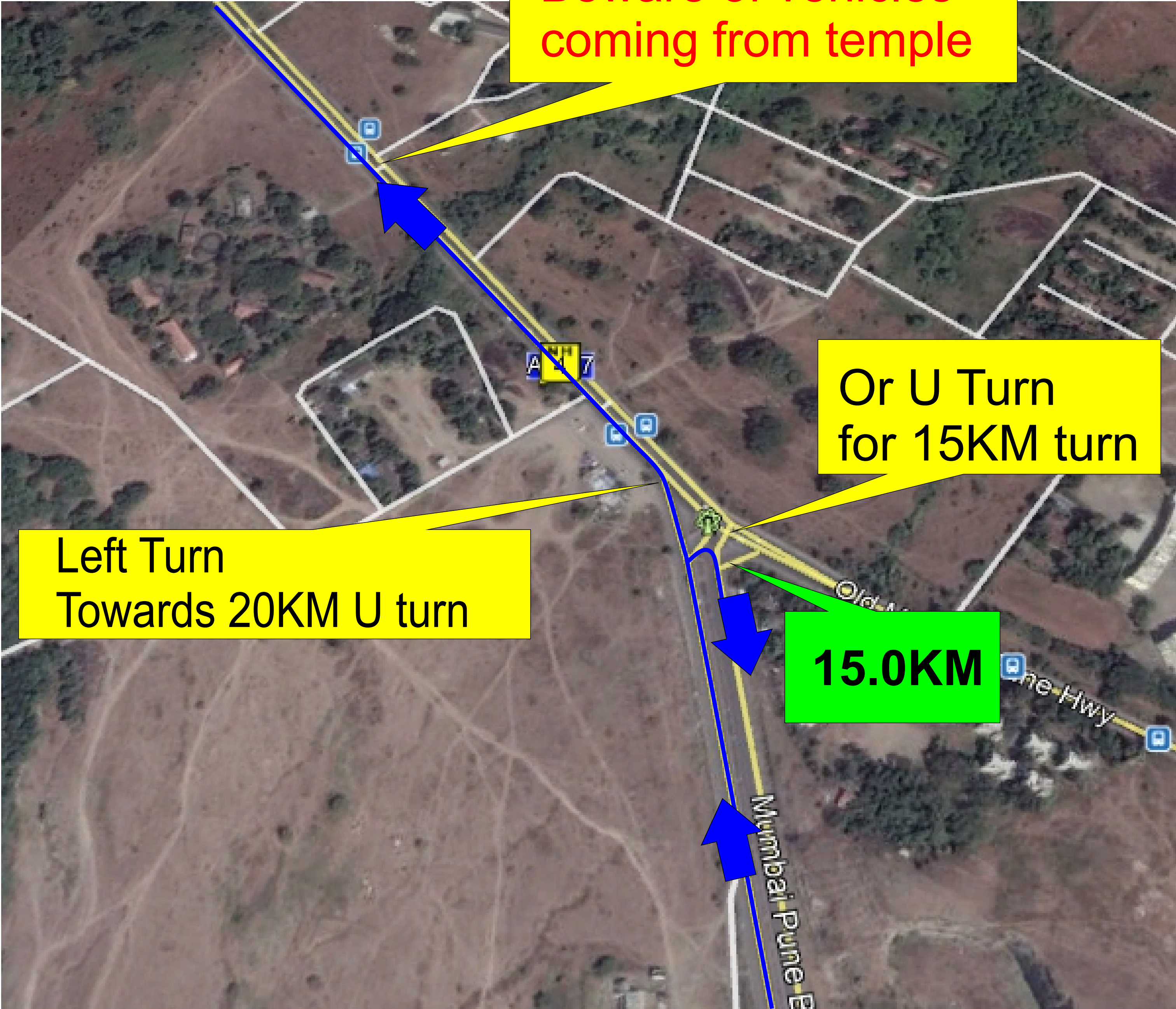
OUT Route

Slow Down Here
Beware of vehicles
coming from temple

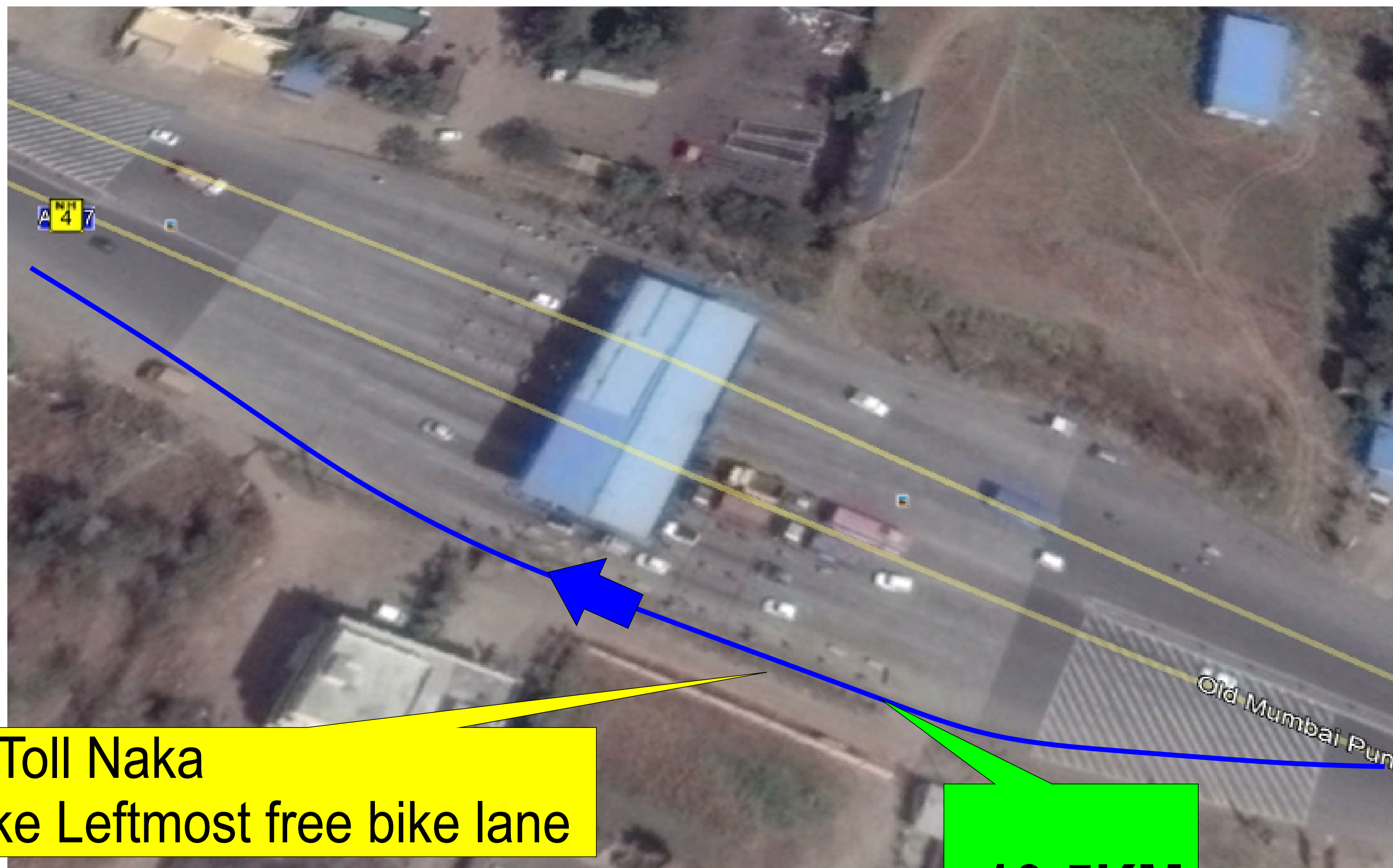
Or U Turn
for 15KM turn

Left Turn
Towards 20KM U turn

15.0KM



OUT Route



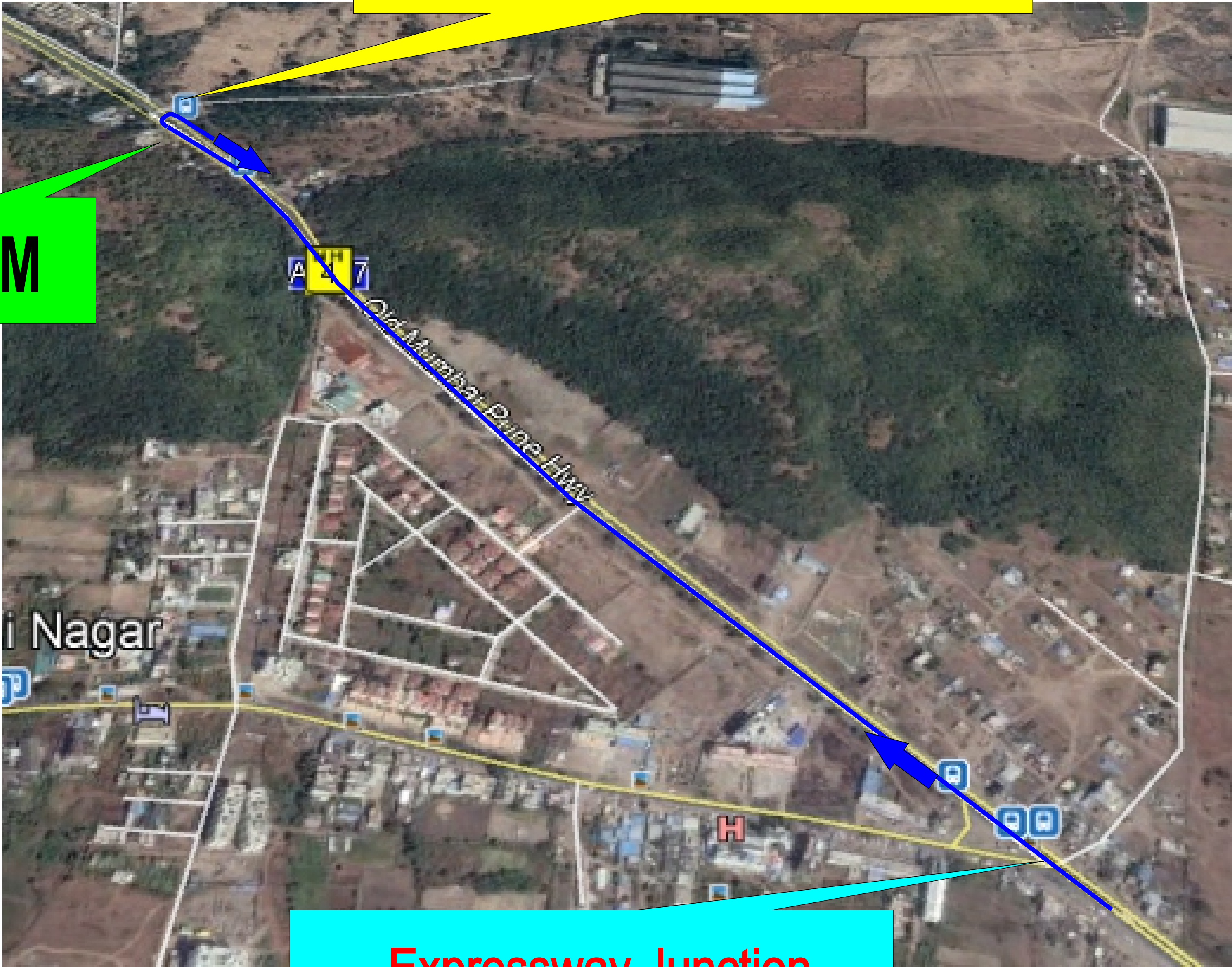
At Toll Naka
Take Leftmost free bike lane

18.5KM

OUT Route

Take U turn here
600m from Expressway Junction
Look For Volunteers

20KM



Expressway Junction

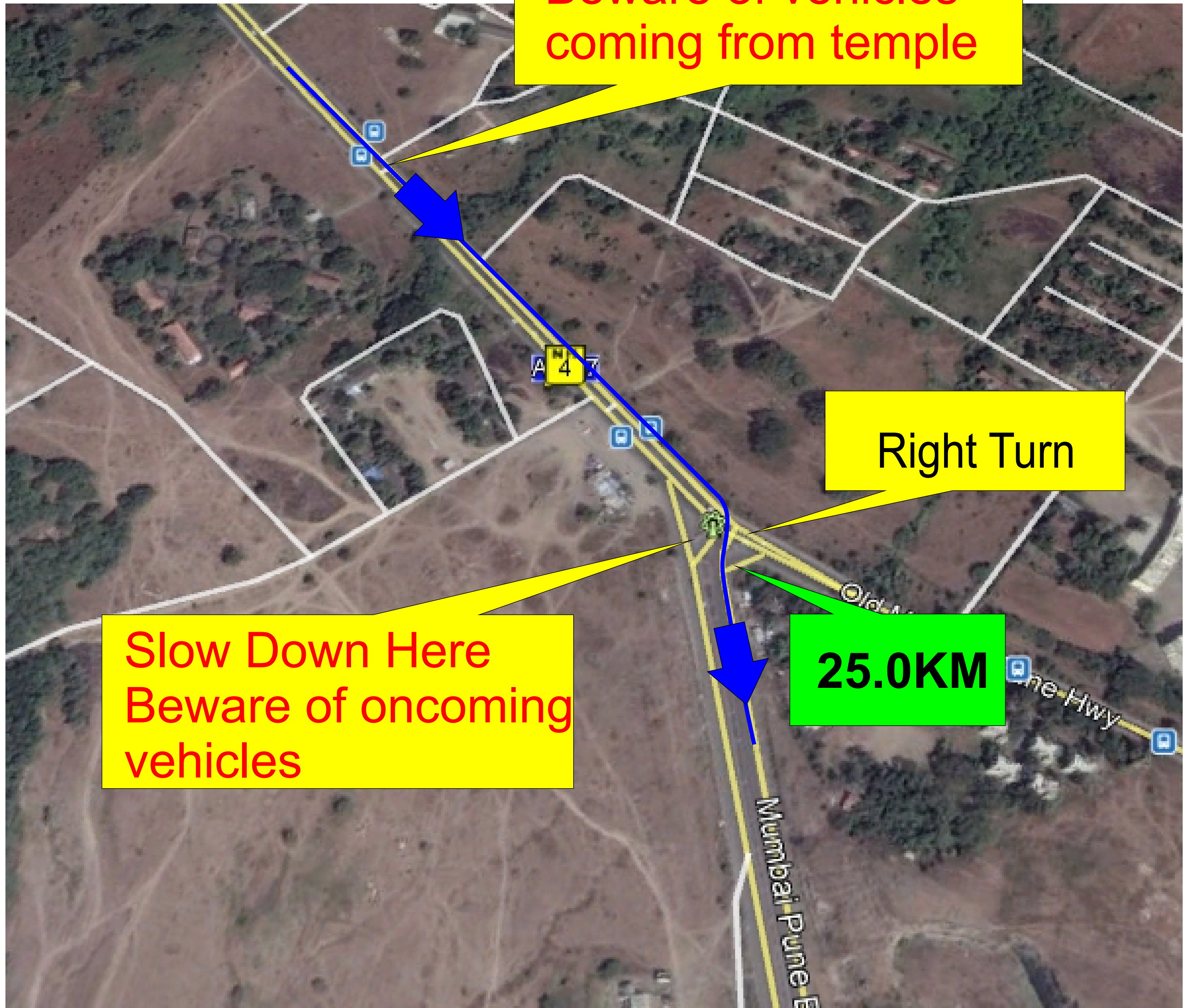
BACK Route

Slow Down Here
Beware of vehicles
coming from temple

Right Turn

Slow Down Here
Beware of oncoming
vehicles

25.0KM



BACK Route

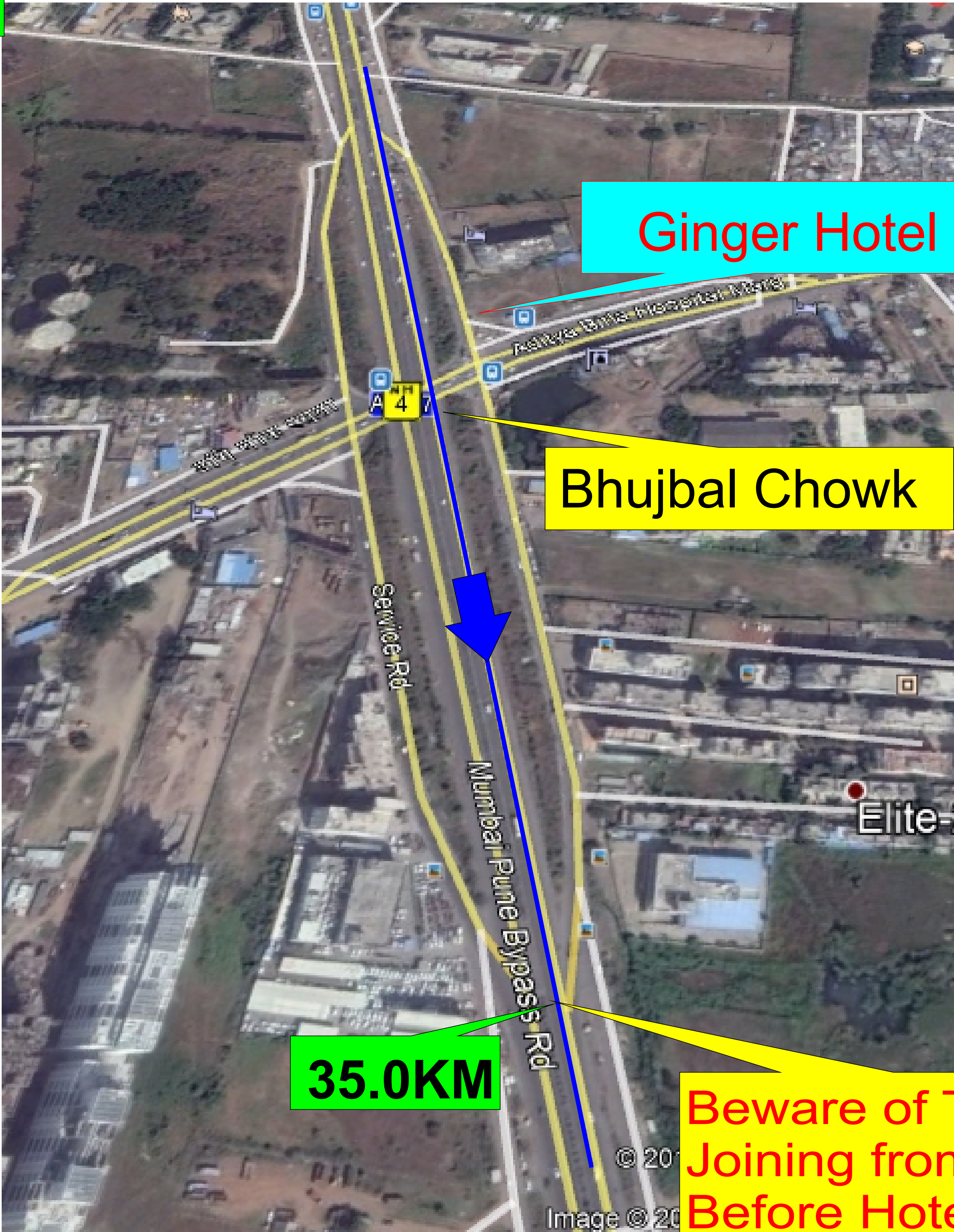


Expressway

SLOW DOWN
Beware of
High Speed Traffic
coming from
Expressway

30.0KM

BACK Route



Finish

BACK Route

Leave NH4 onto
Service Road
Opposite NIA

Right Turn
Below
Overpass

Right Turn
at Balewadi
Gate

